

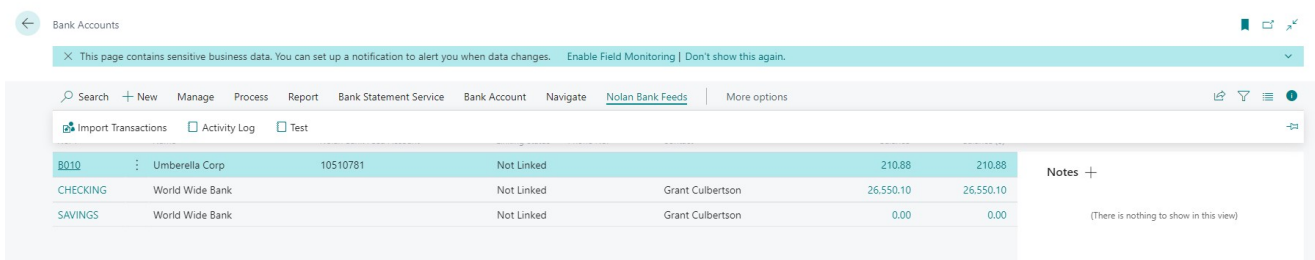
# Daily Processes

Last updated: March 21, 2022

The day-to-day use of Nolan Bank Feeds will not differ greatly from the processes already explained previously. This section will show you how to import your bank statements, but also how to set up a schedule so the whole process can be done automatically.

Firstly, we will again go over how to import your statements from Nolan Cloud Services into Dynamics 365 Business Central.

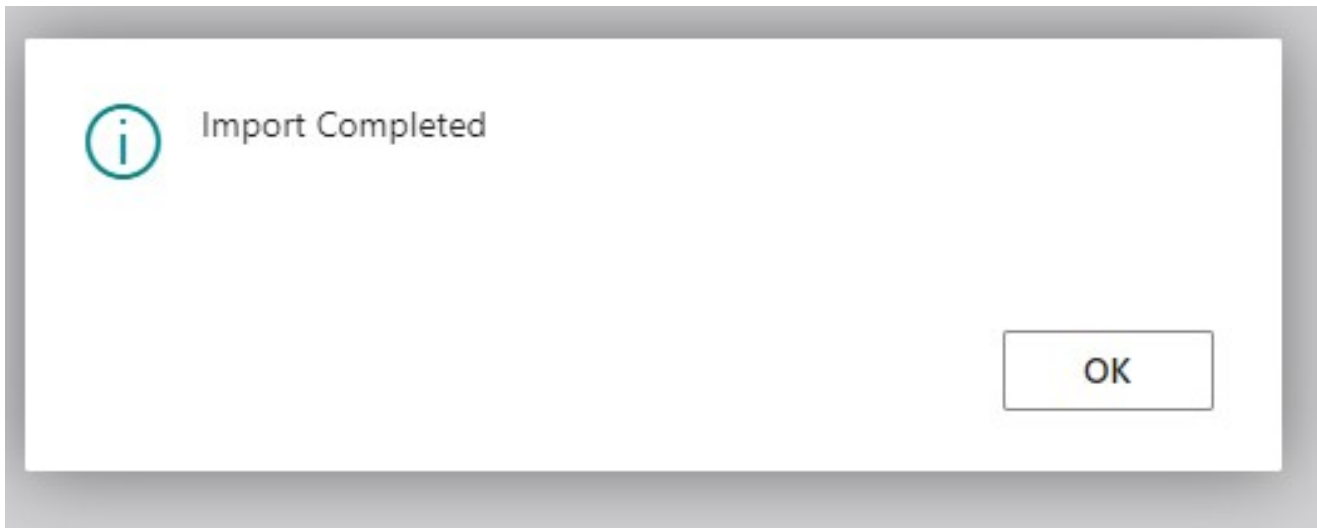
From the **Bank Accounts** screen in **Dynamics 365 Business Central**, select **Nolan Bank Feeds** and **Import Transactions** as seen below.



The screenshot shows the 'Bank Accounts' screen in Dynamics 365 Business Central. The 'Nolan Bank Feeds' tab is selected, and the 'Import Transactions' button is visible. A table of bank accounts is displayed with the following data:

Account ID	Account Name	Account Number	Linked	Bank Name	Balance	Current Balance	Notes
B010	Umbrella Corp	10510781	Not Linked		210.88	210.88	Notes +
CHECKING	World Wide Bank		Not Linked	Grant Culbertson	26,550.10	26,550.10	
SAVINGS	World Wide Bank		Not Linked	Grant Culbertson	0.00	0.00	(There is nothing to show in this view)

You will then be presented with a pop-up stating that the **Transactions** have been successfully **Imported**, such as the one below.



This will now have **Imported** all **Transactions** across all the listed **Bank Accounts** from **Nolan Bank Feeds** into **Dynamics 365 Business Central**.

Now we will go over how you can automate this process, so you never need to do it manually again.

From the **Nolan Bank Feeds Setup** window, you will see a section called **Import Statements on a Schedule**. Here you can configure Nolan Bank Feeds to import statements at a specific time of your choosing.

Simply type your preferred time to run the import process in the **Next Time to Import** field and then make sure the **Run Schedule** slider is activated. This import will then run once a day until the **Run Schedule** slider is deactivated.

Be aware that the timer is in a 24-hour format.

You can choose to create a new schedule whenever you like and not just while you are setting up a new **Bank Entity**.

Please bear in mind that the time you select to run your import process will be based on the current time according to Dynamics 365 Business Central which

differs by region.

This completes the day-to-day use of **Nolan Bank Feeds** which as you can see is extremely simple and easy to configure to your preferences. If you have any further questions, please see our [FAQs](#) .