

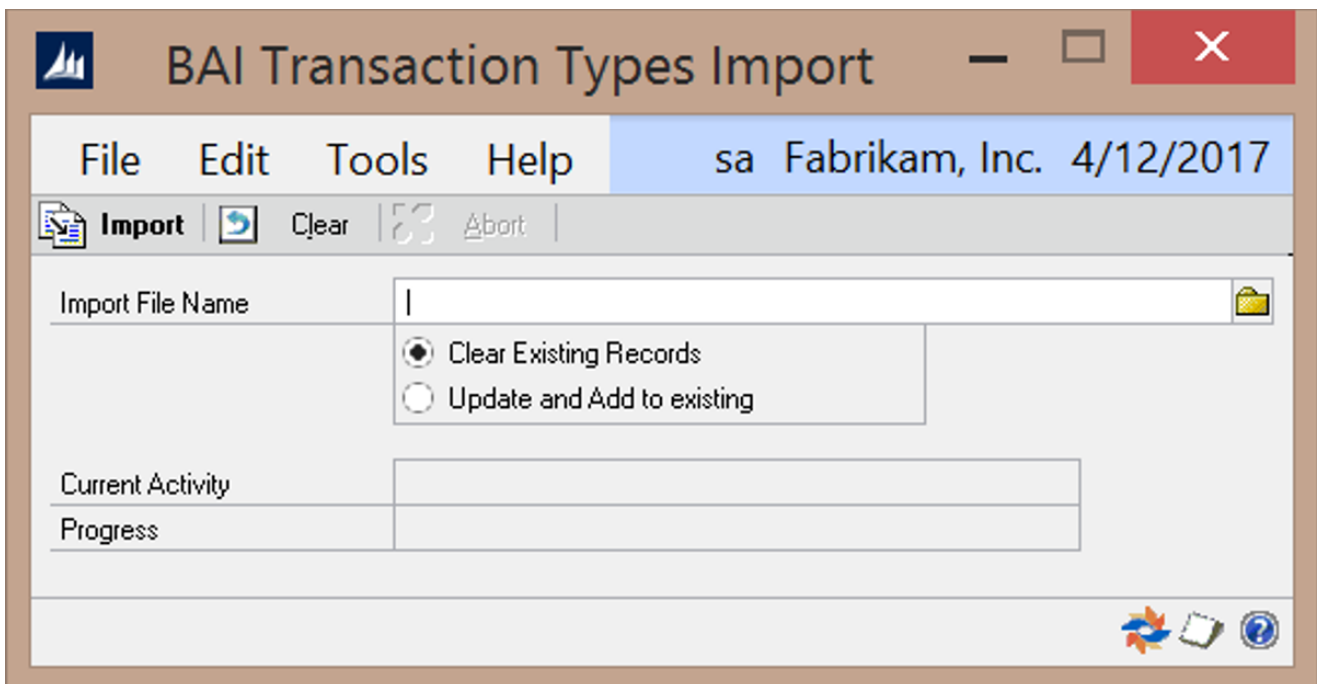
BAI Transaction Types Import

Last updated: August 25, 2022

Location

Tools >> Routines >> Financial >> Advanced Bank Reconciliation >> BAI Transaction Types Import

Layout



Overview

The BAI Transaction Types Import window is used to import a .CSV file containing the transaction types that have been predefined by the BAI specifications. To obtain a copy of this file, please contact a Nolan Business Solutions support representative at USSupport@NolanBusinessSolutions.com.

Fields

Import File Name – The location and name of the file to be imported

- Clear Existing Records – Clears all existing BAI Transaction Types and adds the new types contained in the Import File
- Update and Add to Existing – Updates existing records and adds new types contained in the Import File

Current Activity – Displays the current activity while the import is being processed

Progress – Displays the progress of the import during processing

Buttons

Import – Import the selected import file details

Clear – Clear the window

Abort – Abort the import during processing